



# Milwaukee Computer Society



January 2003

## Monthly Meeting Dates:

Meetings are usually on the third Saturday of the month and start at 12:00 Noon.  
Monthly 3rd Saturdays for the next year are:

? **January 18th**

## Location:

Greenfield Park Lutheran Church  
1236 S. 115th St.  
West Allis, WI  
One block North of West Greenfield Avenue  
on 115th Street - Parking is not a problem.

## This month's demo A look inside a computer

How to in-  
stall a moth-  
erboard,  
RAM, Drives,  
CDs  
and Other  
Boards



## President's Podium

By Rick Janowski

Well, I hope everyone had a wonderful Christmas and an excellent New Year. I also hope you didn't gain any weight like I did over these last few weeks.

Here we are again at the start of the year looking back to see what worked for your computer club and what we can do to get better in 2003. MCS did some good things this past year. Our demos were fairly strong and diversified; we attracted a few new members, which always helps; we learned a few things we didn't know before and we held a successful fundraiser to breathe new life into the clubs coffers. All in all not too bad, now what do we do for an encore?

I think we need to finally get a website up and running. Increasing membership is the biggest challenge but it's not insurmountable. Putting out a new club CD would be nice. Turning our newsletter into something more informative that people (not just MCS members) would look forward to reading each month would also be a nice goal. I'd like to hear some of your ideas at the meeting this

*(Continued on page 2)*

inside...

President's Podium  
MCS Officers and Volunteers  
The Raffle Results  
E-mail addresses  
Editor's Note  
Back Issues of the Newsletter for sale

Page 1  
Page 2  
Page 3  
Page 3  
Page 3  
Page 4

Membership in MCS is open to all individuals and families interested in personal computing. Annual dues are \$25 for an individual or family membership. Dues include a one year subscription to this newsletter and access to all club libraries. Applications for membership may be obtained at the monthly meeting, or by writing us at this address:

**Milwaukee Computer Society**  
**12249 West James Ave.**  
**Franklin, WI 53132**

**MCS Officers**

**President**

Rick Janowski 329-1971  
E-mail: rickj@execpc.com

**Vice President**

Dean Berglund 321-1039  
E-mail: deanberg@wi.rr.com

**Secretary**

Dave Landskron 253-4085  
E-mail: dlandskron@naspa.net

**Treasurer**

Mark Thomas  
E-mail: mjthomas@wi.rr.com

**Newsletter Editor**

Dave Glish 784-9053  
E-mail: dave@encorei.com

**Public Domain Librarian**

Dennis Wilson 546-0282  
E-mail: dcwilson@execpc.com

**Conference Services Secretary**

Joyce (Isenberg) Lydon 246-0053

**MCS Home Page**

(under construction)

[http://www.homestead.com/  
MilwaukeeComputerSociety/mainpage.  
html](http://www.homestead.com/MilwaukeeComputerSociety/mainpage.html)

**MCS advertising rates available on request.**

Opinions expressed herein are those of the individual authors and do not necessarily reflect the opinions of MCS, its officers or advertisers, none of whom are affiliated with any computer manufacturer except as noted.

MS-DOS, Windows are U.S. registered trademarks of Microsoft Corp.

**THE VISION STATEMENT**

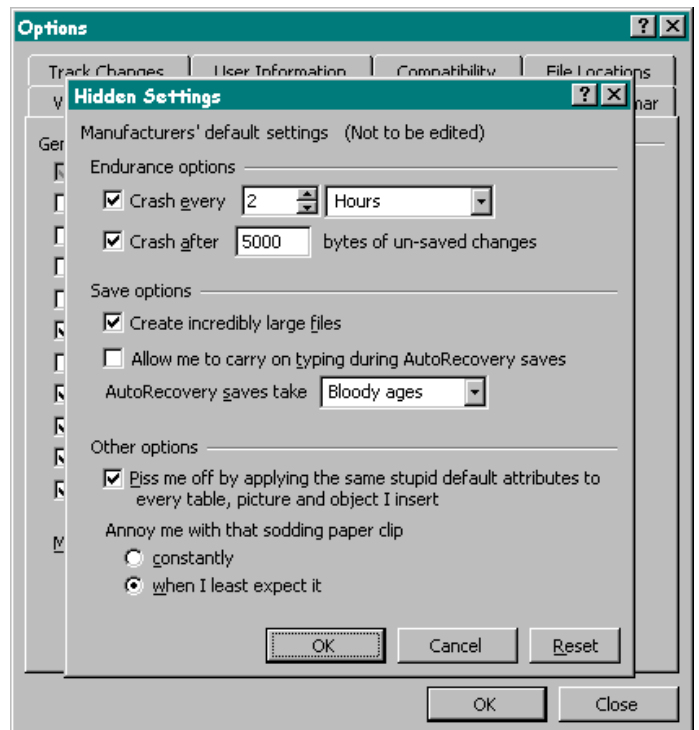
The MILWAUKEE COMPUTER SOCIETY assists the membership in achieving their individual personal computer objectives through the utilization of membership expertise and other resources. Providing companionship, camaraderie, and the opportunity to increase computer knowledge, computer skills, computer expertise and computer applications.

month so be prepared, I may call on you.

Last month was our Christmas party and it looked to me like a good time was had by all. Once again, Joyce and her helpers (I think I saw Gail Gunther and Mrs Rom Braun) did an excellent job of keeping us in food, snacks and dessert. In addition to our first annual raffle, we had our traditional drawing for MCS members. Top prize was a \$25 Best Buy Gift Card and it went to Bob Bruss. A second prize of 50 slim jewel cases was awarded to John Hirsh. Digital cameras were everywhere and I hope to see some shots in the newsletter.

Quite frankly I'm not sure if we have a demo set up for the meeting Saturday but I'm sure we'll figure something out. See you there.

Rick



## The Raffle results

By Rick Janowski

The first ever Milwaukee Computer Society Annual Raffle is over and the response was excellent for a beginner's effort. MCS members managed to sell (or buy for themselves) approximately 350 tickets (over 2/3 of the ticket print run).

After expenses, the money collected will help defray the costs of maintaining the club. Expenses such as business cards and flyers used as handouts at computer shows as well as the rent for our meeting area cost the club several hundred dollars each year. This year's and future raffles will hopefully serve to give the Milwaukee Computer Society an extended lease on existence for many years to come.

As President of MCS, I would like to thank all of the members for contributing to their club. I would like to especially thank those non-members (members to be?) for taking a chance on MCS by purchasing their raffle tickets. We can use all the support we can get.

Following are the winners of this year's raffle.

**FIRST PRIZE: GAIL GUNTHER** (40GB external hard drive).

**SECOND PRIZE: BRUCE SCHNEIDER** (100 pack CD-Rs).

**THIRD PRIZE: JACK SOBCZAK** (128MB of RAM).

Once again, thanks to everyone whose participation made this first of many raffles a success for the Milwaukee Computer Society.

Rick Janowski

## Editor's note

Due to a lack of submissions for articles this month the newsletter will be quite short. I need articles to keep the newsletter going. Please try writing an article or submit some information that can be made into an article.

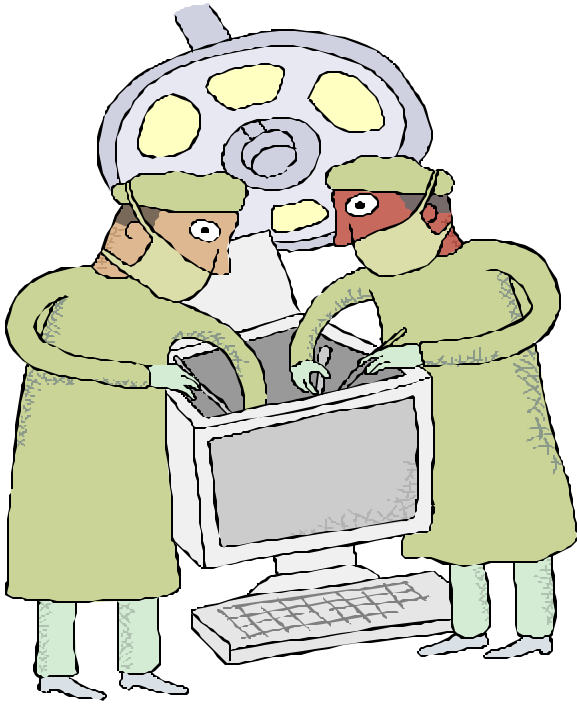
Thanks  
Dave Glish



## E-Mail Addresses

**Members help other members by being available. Have your e-mail address listed and write someone!**

deanberg@wi.rr.com	Dean Berglund
caroil@execpc.com	Bob Bobinger
rbraun1@wi.rr.com	Rom Braun
Dave@encorei.com	Dave Glish
Egettelman@netzero.com	Earl Gettleman
Moraine673@netwurx.net	Joe Griesemer
Rheinrich@wi.rr.com	Linda Heinrich
jhirsh1353@aol.com	John Hirsh
rickj@execpc.com	Rick Janowski
jj1450xl@ix.netcom.com	Dwight "JJ" Johnson
Russmarian@msn.com	Russel John
rgkadau@aol.com	Ralph Kadau
dlandskron@nasp.net	David Landskron
lmusial@wi.rr.com	Lee Musial
wrupp@wi.rr.com	Bill Rupp
Seecurb@nasp.net	Bruce Schneider
mjthomas@wi.rr.com	Mark Thomas
Cverbanac@core.com	Carl Verbanac
dcwilson@execpc.com	Dennis Wilson



Catch this month's demo  
A look inside of a computer

## Newsletter Back-issues on CD

Dave will have back-issues of the MCS newsletter on-sale at this month's meeting for the low price of \$1.00

Issues from November 1996 to January 2003  
Get this deal while it is available

Dave Glish



It's cold outside, come to the  
meeting and have a hot time

Milwaukee Computer Society  
12249 West James Ave.  
Franklin, WI 53132