



Milwaukee Computer Society



February 2004

Monthly Meeting Dates:

Meetings are usually on the third Saturday of the month and start at 12:00 Noon.
Monthly 3rd Saturdays for the next year are:

**This month's meeting
February 21st**

Location:

Greenfield Park Lutheran Church
1236 S. 115th St.
West Allis, WI
One block North of West Greenfield Avenue
on 115th Street - Parking is not a problem.

Turbo-Tax software And the Annual Swapfest

Vice President's Podium

By
Dean Berglund

Happy February to you all.

Last month's demo seemed to go pretty well. I put on a presentation of Microsoft Office Professional Edition 2003 with the excellent reading help of Rick Janowski. Thanks Rick for your help. Microsoft provided a kit that included a CD jam packed, including a video we watched as well as a Power-Point slide presentation and guidebook. Rick read along as the slide show was displayed. It also included a Flash presentation we didn't show because of time constraints but if anyone is interested, I'd be glad to share the CD with you so you can look it over at home at your leisure.

All of the attendees were given a code number to use while filling out an online questionnaire, they will be able to receive a full packaged copy of Microsoft Office Professional Edition 2003 for free. I understand this package retails for \$499.00, quite a good deal! The only caveat is that you need to have MS 2000 or Win-XP running on your PC for

inside...

Vice President's Podium
MCS Officers and Volunteers
The January Meeting
E-mail addresses
Computer hint
Types of Attacks

Page 1
Page 2
Page 3
Page 3
Page 4
Page 4

Membership in MCS is open to all individuals and families interested in personal computing. Annual dues are \$25 for an individual or family membership. Dues include a one year subscription to this newsletter and access to all club libraries. Applications for membership may be obtained at the monthly meeting, or by writing us at this address:

**Milwaukee Computer Society
12249 West James Ave.
Franklin, WI 53132**

MCS Officers

President

Rick Janowski 329-1971
E-mail: rickj@execpc.com

Vice President

Dean Berglund 321-1039
E-mail: deanberg@wi.rr.com

Secretary

Dave Landskron 253-4085
E-mail: dlandskron@naspa.net

Treasurer

Mark Thomas
E-mail: mjthomas@wi.rr.com

Newsletter Editor

Dave Glish 784-9053
E-mail: dave@encorei.com

Public Domain Librarian

Dennis Wilson 546-0282
E-mail: dcwilson@execpc.com

Conference Services Secretary

Joyce (Isenberg) Lydon 246-0053

**MCS Home Page
(under construction)**

MCS advertising rates available on request.

Opinions expressed herein are those of the individual authors and do not necessarily reflect the opinions of **MCS**, its officers or advertisers, none of whom are affiliated with any computer manufacturer except as noted.

MS-DOS, Windows are U.S. registered trademarks of Microsoft Corp.

THE VISION STATEMENT

The MILWAUKEE COMPUTER SOCIETY assists the membership in achieving their individual personal computer objectives through the utilization of membership expertise and other resources. Providing companionship, camaraderie, and the opportunity to increase computer knowledge, computer skills, computer expertise and computer applications.

(Continued from page 1)

this to install and run properly. I found it quite interesting, with nice additions and changes being made to the Microsoft Office suite.

I also want to thank Rom Braun for bringing the projector to the club meeting again. This makes putting on a presentation so much nicer when we can display it on a large screen. We also gave away some really nice software and books provided by Mindshare, a division of Microsoft dedicated to computer user groups. The site seems to be a bit dated in their online newsletter etc. but it's interesting to take a look at. To learn more go to this URL: <http://www.microsoft.com/mindshare/default.aspx>

I understand Mark Thomas has graciously volunteered to do a demo on Tax software at the February's club meeting. I'm sure it will be as interesting as previous times he's done this demo. It's always good to see the new developments the tax software companies come out with. I'm sorry I won't be able to attend this meeting as I'm going to be out of town this Saturday.

I'd like to mention here we all need to start thinking about elections coming up for the club's positions. I'm not sure of the exact month but it's in the near future (eiditor's note: the elections are traditionally in April). Think about running for one of the offices and get more involved in the club at the same time. I know there's a lot of great talent you all have and can share with the rest of the members, as a member of the board.

I have a suggestio n I'd like to present to the club I think we could all have some fun with. This will involve using the Internet and using

(Continued on page 4)

THE JANUARY MEETING

by
Rom Braun

We had a little excitement as the food was being prepared. The hamburgers cooked, the dripping caught fire producing lots of smoke. The fire alarm went off and the exhaust fan worked poorly so we had a little smoke. This all happened because a skillet could not be found.

The food was good and sales were high as the number of persons at the meeting numbered twenty-nine! Just goes to show what can happen when a demo includes the possibility of obtaining a good software package. The software package in this case was MS Office Professional Edition 2003.



Rick and Dean worked well together producing an interesting presentation. Their success was demonstrated with the excellent Q and A session at the end.



Our presenters - Rick and Dean

Then came the business meeting. As usual, Rick mentioned PC World and that is why Rick's picture includes PC World magazine. Rick noted that PC World has an extensive set of files that address many computer items. These items are given a PC World numerical code that can be used at the PC World web site

<http://www.find.pcworld.com/>

not

<http://www.pcworld.com>

You will be directed to Web sites, PC World articles, etc. which provides the information.

The big item at the business meeting was that Dave Glish and Mark Thomas were given the assignment to purchase a Video projector. Looking forward to our Demos taking on a new dimension!

Do you have some useful electronic and or computer items? That question came up, as our February activity (normally a swapfest) is not as active compared to years ago. Donate those useful electronic and or computer items to MCS. MCS will then auction the items off during one of our meetings. That idea has possibilities. Let Dave Glish know what items you have for donation.

E-Mail Addresses

Members help other members by being available. Have your e-mail address listed and write someone!

deanberg@wi.rr.com	Dean Berglund
caroil@execpc.com	Bob Bobinger
rbraun1@wi.rr.com	Rom Braun
dave@encorei.com	Dave Glish
egettelman@netzero.com	Earl Gettleman
moraine673@nconnect.com	Joe Griesemer
dgundrum@wi.rr.com	Dick Gundrum
rheinrich@wi.rr.com	Linda Heinrich
jhirsh1353@aol.com	John Hirsh
rickj@execpc.com	Rick Janowski
Jj1450@megsinet.net	Dwight "JJ" Johnson
marusjon@milwpc.com	Russel John
rgkadau@aol.com	Ralph Kadau
dlandskron@naspa.net	David Landskron
lmusial@wi.rr.com	Lee Musial
wrupp@wi.rr.com	Bill Rupp
seecurb@naspa.net	Bruce Schneider
mjthomas@wi.rr.com	Mark Thomas
cverbanac@core.com	Carl Verbanac
dcwilson@execpc.com	Dennis Wilson

Computer hint:

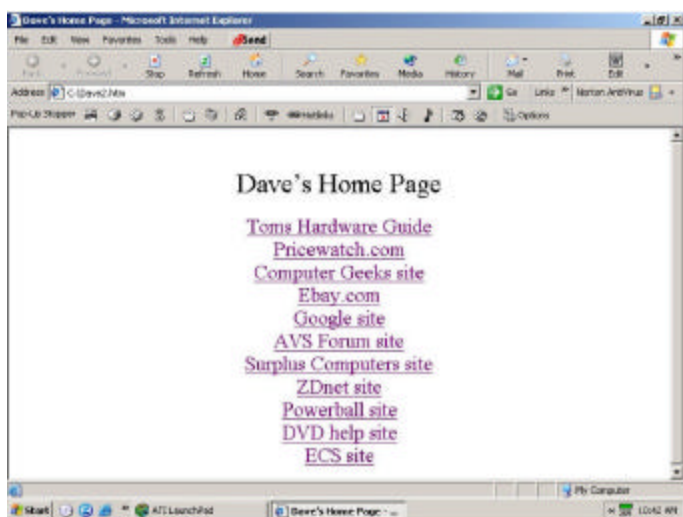
By: Dave Glish

There are many websites that let you make your own homepage. I have a quicker solution that works particularly well for dial-up users.

Create a simple homepage in Microsoft Word or another word processing program that lets you save your work as a webpage. You can then save the webpage on your hard drive.

Now every time you start your browser it will go to this homepage, even if you are not online. This saves getting that dreaded "page not found" message.

I have customized homepage to have links to my favorite sites. This way I can go to Tom's Hardware site, Ebay, Google or a bunch of other sites straight from my homepage. It also makes it easy to edit your homepage if your surfing preferences change.



Dave's is stored on the "C" drive of his computer

Remember
 This month's meeting
 will include the annual
 MCS swapfest

(Continued from page 2)

search engines. Come up with an object, a phrase, a particular file, a question, etc. and (you must have a solution), have the club members come up with an answer by the next meeting or submit them to the newsletter editor. We then can see if we come up with the same location or different location where the location/answers could be found. We might possibly start a new section in the newsletter with these questions and answers. Supply an answer and the location you found it. Possibly a description of how you found the answer. I'll start it off by asking the first question. What is the red thing that hangs off a turkey's neck?

Dean Berglund

Types of Attacks

Excerpted from Microsoft site

Several types of attacks are used to steal information and other assets on the Web. The most common ones include:

- ? Phishing attacks.
- ? Spoofing attacks.
- ? Viruses.

Phishing Attacks

Phishing is the act of luring someone to a spoofed website. One common method is to send an e-mail that looks like it came from a trusted source but that contains a link to a malicious site. The malicious site is designed to look like the legitimate site in an effort to trick you into revealing personal information or downloading a virus.

Spoofing Attacks

Spoofing attacks are commonly used in conjunction with phishing. The spoofed site is usually designed to look like the legitimate site, sometimes using components from the legitimate site. The best way to verify whether you are at a spoofed site is to ver-

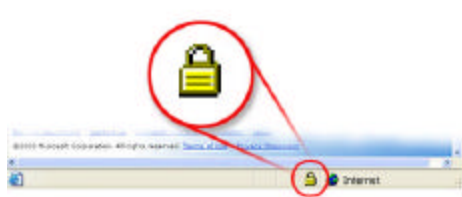
(Continued on page 5)

(Continued from page 4)

ify the certificate. Keep in mind that there are several ways to get the address bar in a browser to display something other than the site you are on. Therefore, do not rely on the text in the address bar as an indication that you are at the site you think you are.

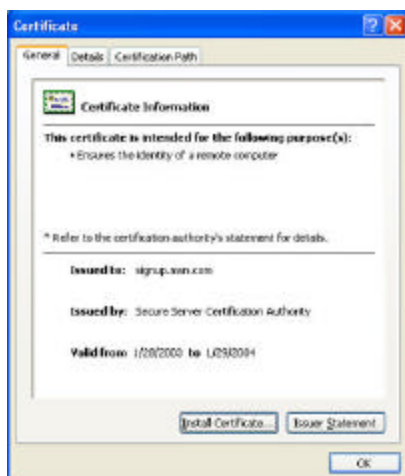
Always verify the security certificate issued to a site before submitting any personal information.

Before submitting any personal information, ensure that you are indeed on the website you intend to be on. In Microsoft® Internet Explorer, you can do this by checking the yellow lock icon on the status bar. This symbol signifies that the website uses encryption to help protect any sensitive personal information—credit card number, Social Security number, payment details—that you enter.



Secure site lock icon. If the lock is closed, then the site uses encryption.

Double-click the lock icon to display the security certificate for the site. This certificate is proof of the identity for the site. When you check the certificate, the name following **Issued to** should match the site you think you are on. If the name differs, you may be on a spoofed site. If you are not sure whether a certificate is legitimate, do not enter any personal information. Play it safe and leave the website.



Legitimate certificate. When new subscribers sign up for MSN® services, they can match the **Issued to** domain name (msn.com) to the website domain name (also msn.com).

Also, be cautious about clicking links in e-mail messages or in online ads from retailers you don't recognize or trust. If you have any doubt about a link, do not click it. Instead, type the website address into the address bar of your Web browser, or try to confirm that the link is legitimate. Remember, if an offer sounds too good to be true, it probably is.

Viruses

Viruses are malicious programs that attackers can use for a variety of purposes, none of them good. These uses include stealing personal information on your computer, destroying all of your data, and turning your computer into a spam-spewing zombie without you even realizing it. Viruses are a traditional problem in computer security. You can help protect your computer against viruses and other malicious programs:

[Learn how to take steps to Protect Your PC](#)

For Technical Assistance

Microsoft wishes you a safe and happy holiday season. If you need assistance with identifying or removing a virus, please contact your antivirus software vendor. If you need more help with virus-related issues, or if you think you have a different security-related problem, please contact Microsoft Product Support Services.

- ? For Microsoft Product Support Services within the United States and Canada, call toll-free (866) PCSAFETY (727-2338).

[For worldwide support, find contact information for Microsoft subsidiaries](#)

Find the full article at:

www.find.pcworld.com/40100

Here is another site that you can check out regarding spoofed websites:

www.find.pcworld.com/40103



Bring your Computer items,
Electronics Games or Videos that
you want to swap to the meeting.
Bring your money to buy.

See you there

Newsletter Back-issues on CD

Dave will have back-issues of the MCS newsletter on-sale at next month's meeting for the low price of \$1.00

Issues from November 1996 to February 2004
Get this deal while it is available

Dave Glish
Newsletter Editor



See our own, Mark Thomas, demonstrate the TurboTax software

Milwaukee Computer Society
12249 West James Ave.
Franklin, WI 53132