



# Milwaukee Computer Society



September 2004

## Monthly Meeting Dates:

Meetings are usually on the third Saturday of the month and start at 12:00 Noon.

Monthly 3rd Saturdays for the next year are:

**This month's meeting  
September 18th**

## Location:

Greenfield Park Lutheran Church  
1236 S. 115th St.  
West Allis, WI  
One block North of West Greenfield Avenue  
on 115th Street - Parking is not a problem.

**The Trouble Free  
PC  
(and how to keep it that way)**

## The President's Podium

by Rick Janowski

Greetings All.

Well I hope your Labor Day weekend was a good one. Now that the Fall season is looming large our thoughts turn to more indoor activities such as watching football, new TV programming, gaming and of course computing.

Just what is it that you do on your computer? Most of us surf the Internet but have you ever taken an online class? Many sites offer online educational courses for free. Google it and whether your interested in learning new computer skills or how to invest like Warren Buffet, I'm sure you'll find something to your liking. If you'd like some help, why not start at [www.about.com](http://www.about.com) or [www.cnet.com](http://www.cnet.com) and see what they might have that suits you.

Perhaps gaming is your thing and you're not ready to purchase that game console or the expensive games they require. There are a number of free games on the Internet. Yahoo has a large area of online gaming but you can also find games to download and play at your leisure on your PC. There are many versions of board games that have been programmed and are available for download or online play. Let's not forget the massively multi-

## inside...

President's Podium  
MCS Officers and Volunteers  
The August Meeting  
E-mail addresses  
Q and A  
Ghost 9  
Virus Writers new trick  
MultiMedia Computer System

Page 1  
Page 2  
Page 3  
Page 3  
Page 4  
Page 5  
Page 5  
Page 5

Membership in MCS is open to all individuals and families interested in personal computing. Annual dues are \$25 for an individual or family membership. Dues include a one year subscription to this newsletter and access to all club libraries. Applications for membership may be obtained at the monthly meeting, or by writing us at this address:

**Milwaukee Computer Society**  
**12249 West James Ave.**  
**Franklin, WI 53132**

**MCS Officers**

**President**

Rick Janowski 329-1971  
E-mail: rickj@execpc.com

**Vice President**

Dean Berglund 321-1039  
E-mail: deanberg@wi.rr.com

**Secretary**

Dave Landskron 253-4085  
E-mail: dlandskron@naspa.net

**Treasurer**

Mark Thomas  
E-mail: mjthomas@wi.rr.com

**Newsletter Editor**

Dave Glish 784-9053  
E-mail: dave@encorei.com

**Public Domain Librarian**

Dennis Wilson 546-0282  
E-mail: dcwilson@execpc.com

**Conference Services Secretary**

Joyce (Isenberg) Lydon 246-0053

**MCS Home Page**  
(under construction)

**MCS** advertising rates available on request.

Opinions expressed herein are those of the individual authors and do not necessarily reflect the opinions of **MCS**, its officers or advertisers, none of whom are affiliated with any computer manufacturer except as noted.

MS-DOS, Windows are U.S. registered trademarks of Microsoft Corp.

**THE VISION STATEMENT**

The MILWAUKEE COMPUTER SOCIETY assists the membership in achieving their individual personal computer objectives through the utilization of membership expertise and other resources. Providing companionship, camaraderie, and the opportunity to increase computer knowledge, computer skills, computer expertise and computer applications.

*(Continued from page 1)*

player online role-playing games as they stand poised to take over much of computer gaming as we know it.

Music, video, archiving, scrapbooking, desktop publishing and just about anything else you set your mind to can be done on a computer. Give it a try.

Computers: They're not just for word processing anymore!

Speaking of gaming, I spent last month's meeting in Indianapolis at the largest gaming convention in North America, Gen Con. It was impressive to be sure but was it better there than in Milwaukee? You'll have to come to the meeting to find out what I think about that but suffice it to say it was much larger than Milwaukee's rendition. It felt like I walked 10 miles or more a day. Sore feet aside, I liked most of what I saw and spent more than a few dollars on "toys". I'll give you the lowdown on Saturday.

I'm told that last month's meeting was a success. We will be starting our now annual fundraiser this month using the Pocket Peelers coupon card. I will be bringing cards for our members to sell. It's your chance to spread the news about our club and support it at the same time. We need a new or up-graded computer for the club and this is how we will try to fund that equipment. Start lining up buyers now.

That's all for now. See you at the meeting!

Rick

# THE AUGUST MEETING

by: Dave Glish

Since Rom was not able to make the August meeting I will give a short rundown of what took place.

The demo was supposed to be on downloading files and how to organize them on your computer. The demo-demons were out in force and we were not



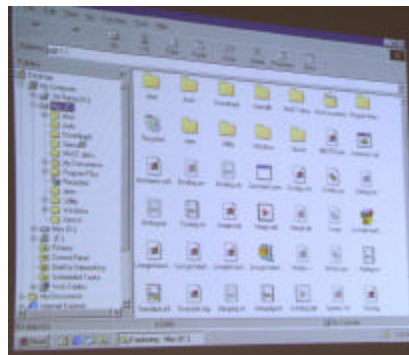
Dean discussing the desktop

able to get an internet connection up and running. Instead of downloading files, we had a discussion on where the files go and how to organize files (using ones already on the computer and a few that Dean brought along). We also had a general question and answer period where we talked about any areas that members had questions on.

The members also discussed the idea of selling Pocket-Peelers again this year as a fundraising project. It was decided that last year's effort went well and that we should try selling them again this year. Come to this month's meeting and learn more about the Pocket-Peelers.

This month's demo will be on techniques to make your PC trouble free and safeguard your computer.

Check it out.



Joyce will not be at the meeting this month, so eat before you come.

## E-Mail Addresses

Members help other members by being available. Have your e-mail address listed and write someone!

- |                         |                     |
|-------------------------|---------------------|
| deanberg@wi.rr.com      | Dean Berglund       |
| caroil@execpc.com       | Bob Bobinger        |
| rbraun1@wi.rr.com       | Rom Braun           |
| dave@encorei.com        | Dave Glish          |
| egettelman@netzero.com  | Earl Gettleman      |
| moraine673@nconnect.net | Joe Griesemer       |
| dgundrum@wi.rr.com      | Dick Gundrum        |
| rheinrich@wi.rr.com     | Linda Heinrich      |
| jhirsh1353@aol.com      | John Hirsh          |
| rickj@execpc.com        | Rick Janowski       |
| Jj1450@megsinet.net     | Dwight "JJ" Johnson |
| marusjon@milwpc.com     | Russel John         |
| rgkadau@aol.com         | Ralph Kadau         |
| dlandskron@naspa.net    | David Landskron     |
| lmusial@wi.rr.com       | Lee Musial          |
| wrupp@wi.rr.com         | Bill Rupp           |
| seecurb@naspa.net       | Bruce Schneider     |
| mjthomas@wi.rr.com      | Mark Thomas         |
| cverbanac@core.com      | Carl Verbanac       |
| dcwilson@execpc.com     | Dennis Wilson       |

## Q & A

Here is a question that many users are running into today. Having a second hard drive for backup purposes can be a real benefit or perhaps, as in the following case, a user simply wants to upgrade to a larger drive. The question does not take into consideration, however, the need to transfer information from the old drive to the new. A question for another time.

Remember; check out [www.cnet.com](http://www.cnet.com) for a wide variety of computer solutions.

### Question:

I just replaced my 40GB hard drive with a new 80GB one. But now my computer shows the drive at less than half of its capacity. I am running Windows Me with a 1.4GHz P4. What is wrong here?

### Answer:

The answer may be very simple or more complex depending on what's causing the problem. Since your 40GB drive appears to be running fine, which means your system is likely OK with larger drives, hopefully the answer will be simple. But if the short answer doesn't work, try the other solutions. Consider upgrading your operating system. Though probably not the problem in this case, it's still a good idea.

Some drives have jumper settings that allow them to be compatible with older BIOSs that wouldn't recognize drives less than 32GB drives at all (or would recognize them incorrectly) and that when set tell the drive to pretend to be only 32GB. You can fix that by changing the jumper settings. Check your drive manufacturer's Web site or do a Google search with the name of your drive (model #) and "32 GB" and/or "Jumper," to find the exact settings. This is very easy to check. (A jumper, for those who aren't familiar with the term, is a little plastic piece that you place between two pins that allows you to select certain settings, which must be made at a hardware level. All modern hard drives have one--for Master or Slave, when in use with two or more drives--and some have more than one.) This is the most likely

solution, especially since you were running a 40GB drive before.

**(WARNING: Flashing a computer's BIOS is a task best left to a qualified computer technician. If you decide to try it, follow the manufacturer's instructions to the letter. Flashing the BIOS is a serious task and if done incorrectly, can render your system completely useless.)**

Second, your BIOS may be recognizing it incorrectly. This is less likely; since you had the 40GB drive running before, but not impossible (some BIOS's recognize some but not all drives properly and some have issues with drives less than 64GB). This is a little harder to fix but not too tough. First, find out the make of your motherboard. If you don't know, you can either check your manufacturer's Web site, (if you bought it from a major manufacturer) or use a program like CPU-Z, which will tell you the chipset of your motherboard. Next, go to the Web site and check for a BIOS update. Run the update. It requires booting up from a formatted disk. **BE CAREFUL HERE!** Read all warnings and follow instructions to the letter; updating your BIOS is totally safe if done correctly but is **VERY** risky if you don't follow instructions as you can make your computer unbootable.

One of these two suggestions will likely fix the problem. WIN ME isn't the greatest OS to be running, and certainly isn't helping (although it can support over a 100GB drive). Using Windows 2000 or Windows XP, which run natively on NTFS (a way of accessing files on disk that doesn't have the space limitations that Windows 95-98-ME does), would help in the long run.

Alternatively, you could always try to partition the disk and essentially split a large drive into several smaller disks. This is also a bit risky if not done correctly and you could easily lose all data on a disk but if it's a new drive, you're probably OK. Fdisk (a Microsoft utility) can tell you if the OS can "see" the whole drive. Click **Start > Run > type command** and then in the DOS window type "**fdisk c:**" (or whatever drive letter you're using) and it'll check out

the drive and provide you with the details. The utility can partition a drive although it's not as good as a program called Partition Magic at keeping data safe. Partitioning shouldn't be necessary as the original 40GB drive is running fine.

## Norton Ghost 9

by: Mark Thomas

Symantec has updated its Norton Ghost backup utility making it much easier to use. The new Ghost is based on PowerQuest's Drive Image 7.0 which Symantec bought out.

Ghost 9 can now even back up your operating system partition from within Windows, no reboot required. Older versions had to be used in DOS. Plus, Ghost can now create incremental images of your hard drive--a time-saver that backs up only changes (previous versions created a full image every time).

Another new feature lets you schedule image backups to run in the background, as you work. If disaster strikes and you can't boot into Windows it is easy to recover a backup image. Reboot your computer from the installation CD and follow the on screen instructions load your backup image. I did a full backup of my C Drive with image verification in 16 minutes.

Ghost 9 supports most drives, CD+/-RW, DVD+/-RW, USB or Firewire external drives, and SATA hard drives. Partition Magic is included on the CD. Symantec includes a guided tour of backing up your hard drive, and recovering a backup image with Ghost. This is very useful if you aren't familiar with previous versions of Ghost.

There is a drawback with using this latest version of Ghost, installation requires Microsoft's .NET framework. I have noticed that more and more software requires .NET installation before you can install the software. Ghost 9 costs about \$70, but you can often find it on sale.

## Virus writers add network sniffer to worm

By [John Leyden](#)

Published Tuesday 14th September 2004 11:18 GMT

Virus writers have grafted a network sniffer into the latest variant of the SDBot worm series.

So far there are no reports of [SDBot-UH](#) in the wild but the inclusion of selective network sniffing along with keystroke logging features and other backdoor capabilities has security researchers worried.

[Sniffers](#) are designed to monitor network traffic.

They are widely used for network performance diagnostics but in this instance their function has been turned to malign purposes. Bundling a network sniffer with an auto-propagating worm makes it easier for hackers to harvest usernames and passwords than would otherwise be the case.

The sniffing capabilities of SDBot-UH worm focus on phrases associated with network logins and Paypal accounts. It also tries to steal the CD keys of games, according to an [advisory](#) by AV firm Trend Micro. Patrick Nolan, a security researcher at the Internet Storm Center, [warns](#): "If the Trojans described by Trend can successfully transmit the filter's packet captures back to the owner, they are going to cause problems well beyond typical bot infestation issues."

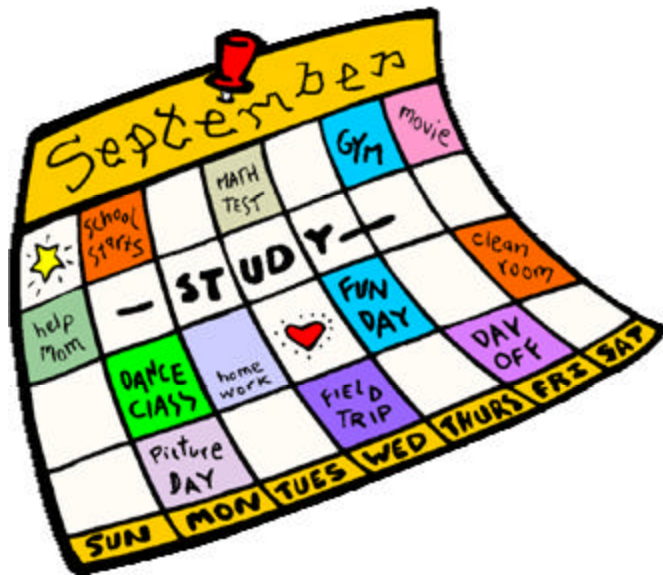
SDBot-UH uses a variety of well-known Microsoft exploits to spread. It also looks for weak usernames and passwords to gain access to target machines. Malicious sniffers can be difficult to detect but Netcraft [points](#) to a number of tools such as Sentinel and AntiSniff that can be used to detect sniffers on a network. Individual users would do well to check that their network card is not set in promiscuous (sniffing) mode.

## MultiMedia Computer System

Come to the September meeting and take a peek at my new, home-built, MultiMedia computer. It works like a TIVO, a VCR, a Stereo Tuner and it looks like a piece of stereo equipment. Check it out.

Dave





Remember to mark your calendar for the meeting this Saturday

Warning !!!  
No snackbar this month

This month's demo

# The Trouble Free PC

Atari Archive disks  
and  
MCS newsletter back-issue disks  
Are available at  
the monthly meeting

Get yours now

Milwaukee Computer Society  
12249 West James Ave.  
Franklin, WI 53132